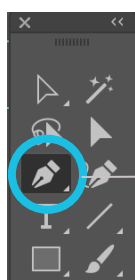
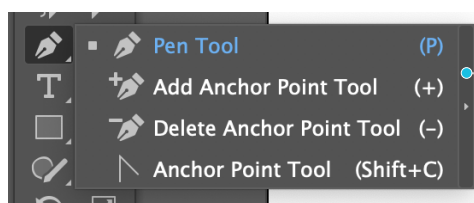


Drawing Half



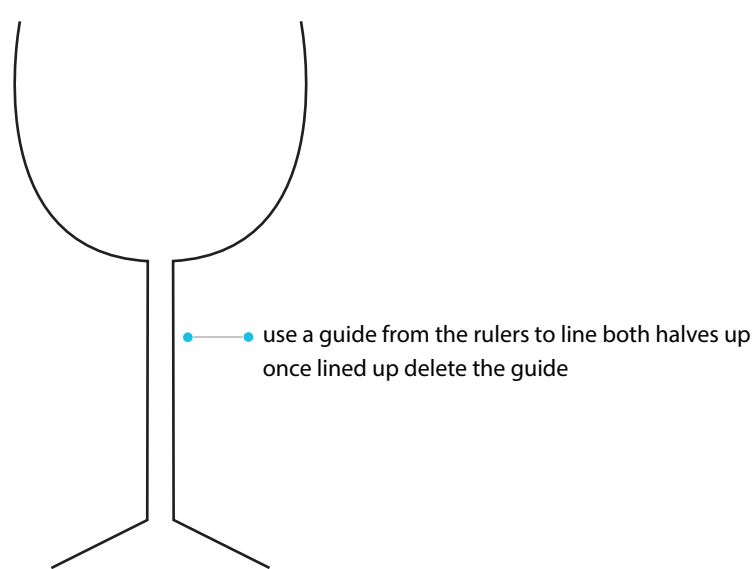
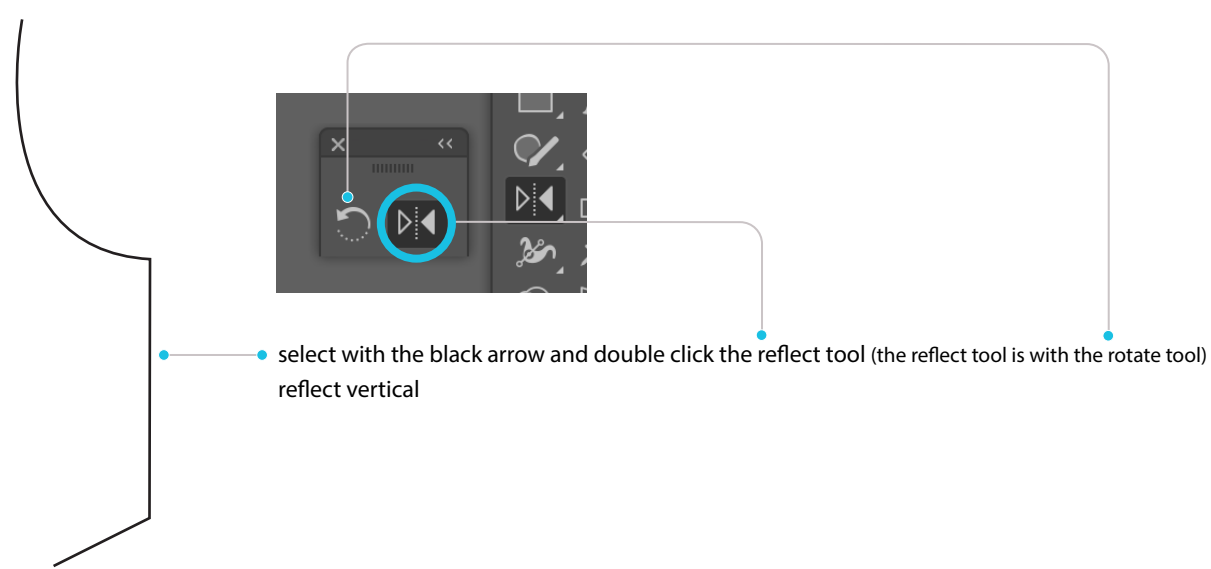
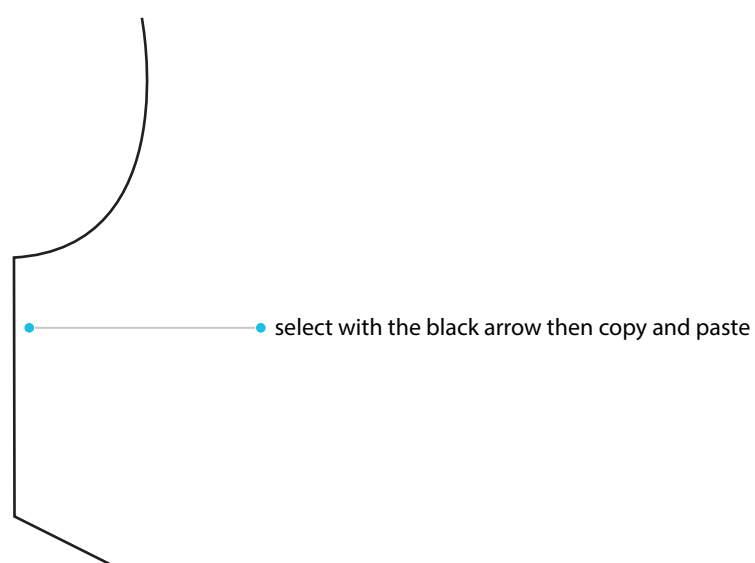
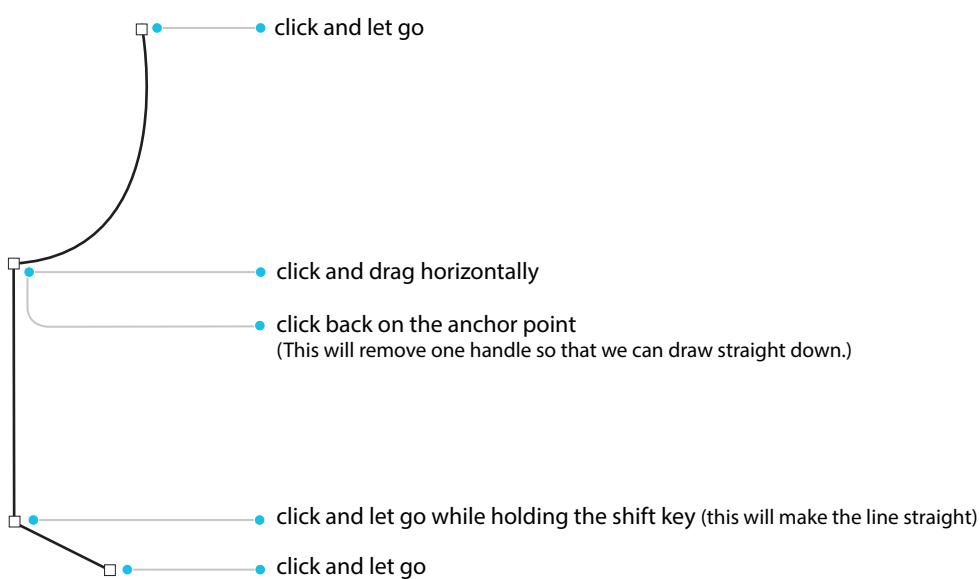
Tools with little bottom right arrows have more tools underneath them.

To reach the additional tools click on the little arrow and hold down the mouse. With the mouse down, move across the window to the bar at the end. Let go of the mouse when you see the bar at the end turn dark. Now you have a menu you can move around the document with access to additional tools.

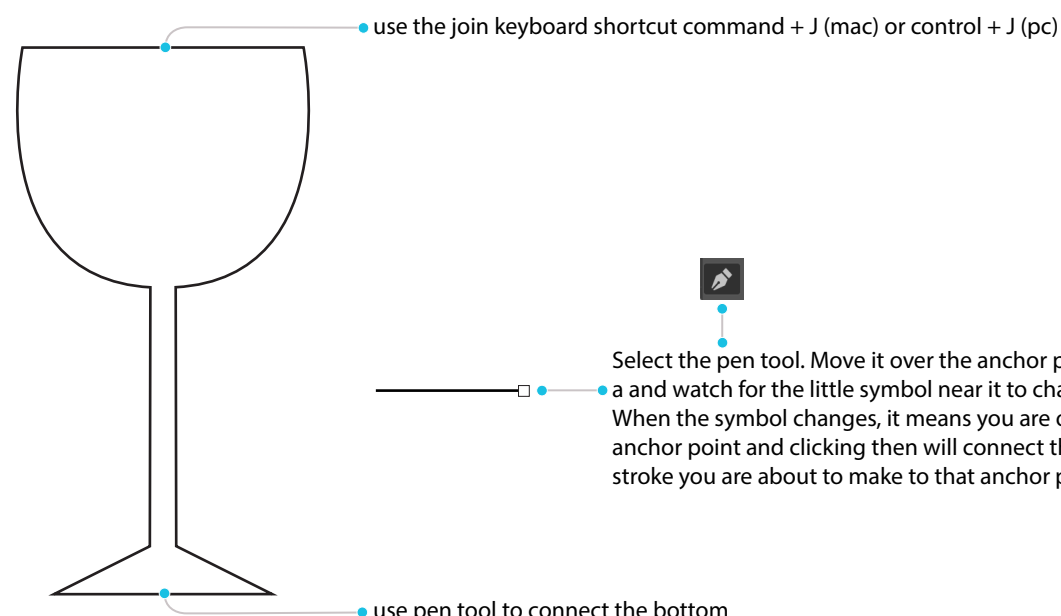


The Wine Glass Exercise

Look for symmetry in the object. If it is there, speed up the work and make it look professional by drawing half, and then using that half to complete the object.



There are two options for connecting the top and bottom and making the wine glass a closed path. Either use the join keyboard command or the pen tool. Try both in this exercise.



Remember to speed up your work flow, draw half, copy and paste, flip or rotate, and it will be professionally done!