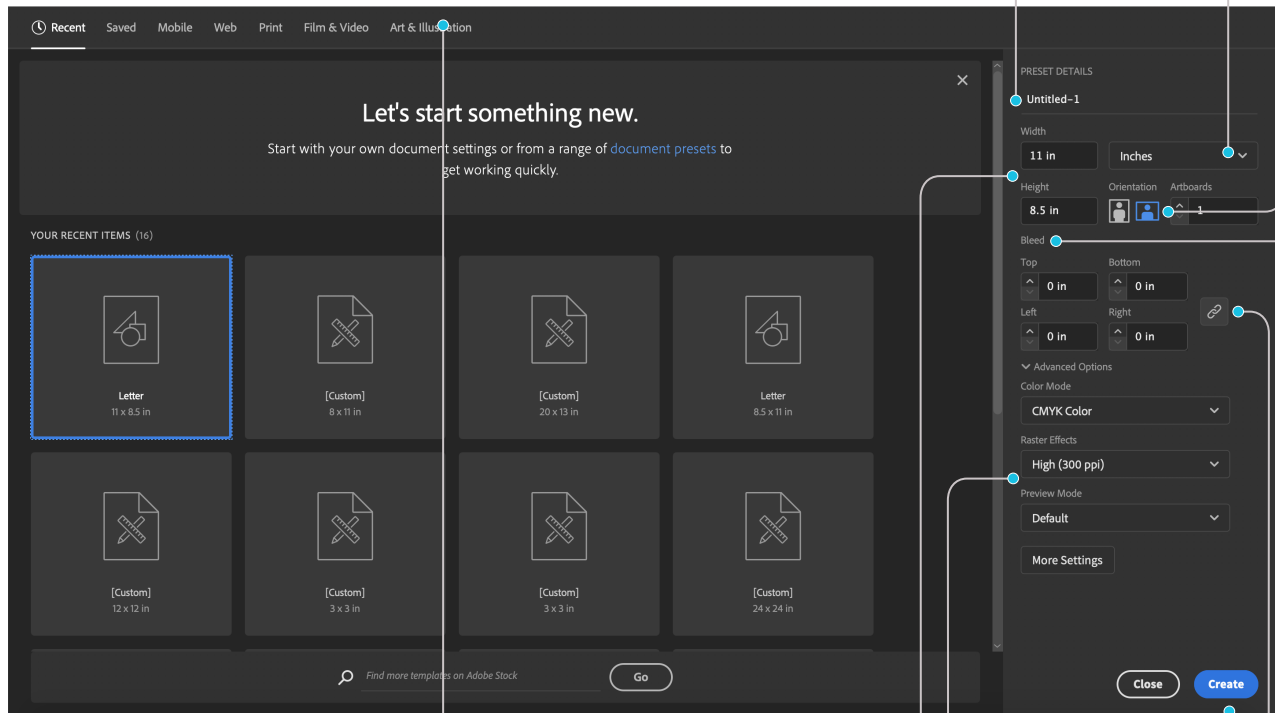


Illustrator Setup

The orientation of a document can be changed to horizontal or vertical.

Illustrator's measurement options in the drop down menu, range from inches for making posters to yards for a banners.

Be sure to name your document something clear and relevant to the project you are creating to find it easily through a search.



Illustrator has preset standard document sizes for a number of common projects.

The height and width of a document can be adjusted.

RGB color mode is used for digital or web documents, while CMYK is used for printed materials.

The chain icon locks and unlocks the bleed settings. To change all the settings at once use the lock. To change individual settings unclick the lock.

Bleed is utilized in print documents. The bleed is extra room around a document to give room for error during trimming after printing.

When you have everything set as needed click create.